



Connect the Future

Gigabit Ethernet over Wi-Fi / Bluetooth AP

IP Ethernet over 2Wire Transceiver

IP Ethernet over Coax Transceiver

IP Ethernet over UTP Transceiver



Wireless & Wired Product

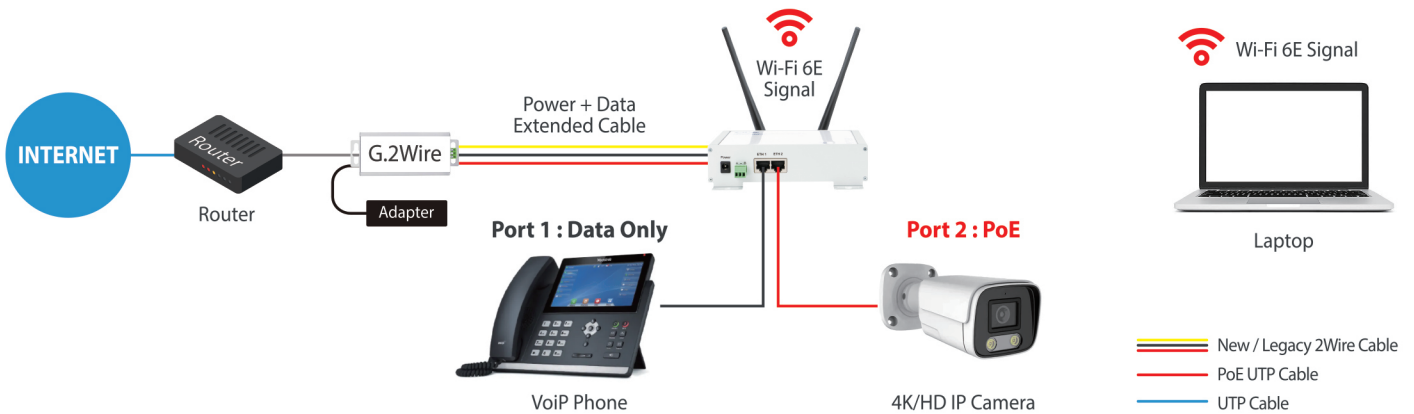


Model No. **C4L2000G-WB6E-2E**
Gigabit 2Wire Extender over Wi-Fi / Bluetooth AP

Product Features

- High data rate : Up to 2000 Mbps for Wired network
Up to 2402 Mbps for Wi-Fi network
- Support Wired & Wireless network infrastructure transmission for the seamless network
- Unparalleled Tri-Band Speed - Boost your overall speeds up to 2402 Mbps (6 GHz) + 2402 Mbps (5 GHz) + 574 Mbps (2.4 GHz)
- WiFi 6E Standard - Expand to the clearer, broader 6 GHz band for more bandwidth and faster speeds
- Reliable Connections - The latest Intel® Wi-Fi 6E chipset's reduced latency and improved reliability unlocks your Wi-Fi 6E router's full potential
- Bluetooth 5.3 - The latest Bluetooth technology achieves faster speeds and broader coverage
- Using Legacy & New 2Wire & UTP cables for AV Device, IP Networking, Game Console and IP Surveillance application
- Wired Coverage : Long range Ethernet data extension over 2Wire / UTP Max. 2,296 feet. (700 Meters)
- IEEE 802.3 af/at Compliant PoE for PoE Powered Device(PD), Wi-Fi AP, IP camera, VoIP

C4L2000G-WB6E-2E Typical Application



Specifications

Standards	<ul style="list-style-type: none"> • Wired : IEEE 802.3, IEEE 802.3u, IEEE 802.3ab, IEEE 802.3x, IEEE 802.3az, IEEE 802.3p, Auto MDI/X, ITU-T G.hn Standard (Recommendations G.9960, G.9961, G.9962, G.9963 and G.9964) • Wireless : 2402 Mbps on 6 GHz + 2402 Mbps on 5 GHz + 574 Mbps on 2.4 GHz, compatible with 802.11a/b/g/n/ac/ax Wi-Fi standards
Protocols	<ul style="list-style-type: none"> • Wired : TDMA, CSMA • Wireless : OFDMA, MU-MIMO
Transmission Speeds	<ul style="list-style-type: none"> • Wired : Ethernet : 10 / 100 / 1000 Mbps, Extended 2Wire : 2000 Mbps • Wireless : 2402 Mbps @ 6GHz & 5GHz, 547 Mbps @ 2.4 GHz
Bluetooth Standard	Bluetooth 5.3
Frequency Band	<ul style="list-style-type: none"> • Wired : 3.5 ~ 190 MHz • Wireless : 6 GHz, 5GHz, 2.5GHz
Security	<ul style="list-style-type: none"> • Wired : 128 Bit AES CCMP Encryption • Wireless : WPA3
Power Consumption	55VDC 240mA, 13 Watts
AC to DC Power Supply	• Input AC : 100 ~ 240 VAC, 50 ~ 60 Hz, 48V to 56VDC / 1A ~ 1.6A (For PoE Function, please use 48V 0.83A Adapter at least.)
Ethernet Interface	• Connector Type : 2 Port of RJ45
PoE Standard	IEEE 802.3 af/at PoE+ 40Watts (Number 2 Port is PoE Port)
Extended Port Interface	• Connector Type : 3 Port Terminal Block
IGMP	<ul style="list-style-type: none"> • Support Cable : 2Wire, Cat 5., Cat 5E., Cat 6., Cat 6E., Cat 7. • Hardware packet inspection for IPv4 IGMP Snooping and IPv6 MLD • Support IGMP managed multicast sessions • IGMP snooping with multicast to multiple unicast support • IGMP/MLD Address Filtering
LED Indication	<ul style="list-style-type: none"> • ETH1 : Ethernet Port 1(Data Only) • ETH2 : Ethernet Port 2 (Data + PoE) • Wi-Fi : Wi-Fi Link On • BT : Bluetooth Link On • Power : Power On • EXT : Wired Link On
Mechanical Dimension	152 x 148 x 42 mm, 5.98 x 5.82 x 1.65 in (H x W x L, Wi-Fi Antenna Excluded)
Weight	462g
Temperature	<ul style="list-style-type: none"> • Operating Temperature : 0°C ~ +50°C (+32°F ~ +122°F) • Storage Temperature : 0°C ~ +50°C (+32°F ~ +122°F)
Humidity	10 ~ 90 % Humidity (non-condensing)
Certifications	CE Class A, FCC

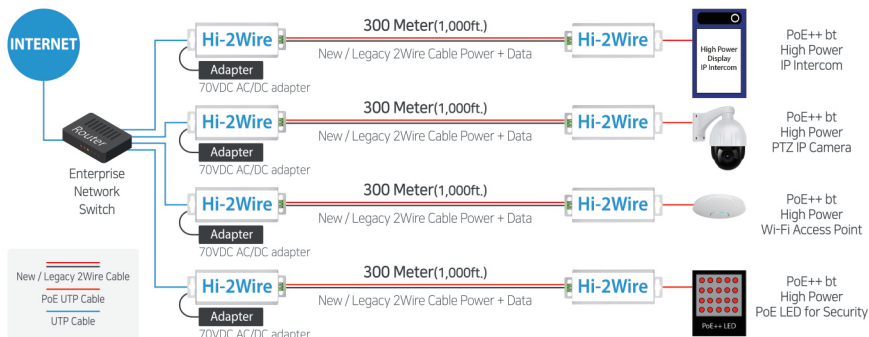
PoE++ bt 10/100Mbps Products

C4L6400-2W-BT

PoE++ bt over 2Wire Transceiver



Specifications			
Standards	IEEE 802.3, IEEE 802.3u, IEEE 802.3x, Auto MDI/X	Power	Input AC : 100 ~ 240 VAC, 50 ~ 60 Hz 5V to 70VDC / 1A ~ 1.6A (For PoE Function, please use 48V 0.83A Adapter at least.)
LAN Port	Connector Type : RJ45 Speed : 10/100 Base T, half/full duplex, auto-negotiation PoE : IEEE 802.3 af/at/bt PoE++ 90Watts	Extended 2Wire Port	Connector Type : 2Pin Terminal Block Support Cable : 2Wire, Cat 5, Cat 5E, Cat 6, Cat 6E, Cat 7. Transmission Distance : 300 Meters
Connectors	Ethernet : RJ45 Extended 2Wire : 2Pin Terminal Block Power : DC Jack	Environmental	Operating Temperature : -40°C ~ +80°C (-40°F ~ +176°F) Storage Temperature : -40°C ~ +80°C (-40°F ~ +176°F) Humidity : 10 ~ 90 % (non-condensing)
Dimension	40 x 40 x 76 mm, 1.57 x 1.57 x 2.99 in (H x W x L, Without Bracket Length)		

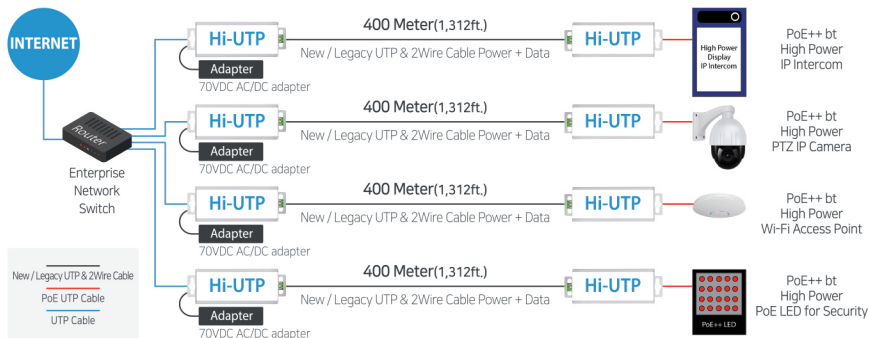


C4L6400-TWP-BT

PoE++ bt over UTP Transceiver



Specifications			
Standards	IEEE 802.3, IEEE 802.3u, IEEE 802.3x, Auto MDI/X	Power	Input AC : 100 ~ 240 VAC, 50 ~ 60 Hz 5V to 70VDC / 1A ~ 1.6A (For PoE Function, please use 48V 0.83A Adapter at least.)
LAN Port	Connector Type : RJ45 Speed : 10/100 Base T, half/full duplex, auto-negotiation PoE : IEEE 802.3 af/at/bt PoE++ 90Watts	Extended UTP Port	Connector Type : RJ45 Support Cable : 2Wire, Cat 5, Cat 5E, Cat 6, Cat 6E, Cat 7. Transmission Distance : 500 Meters
Connectors	Ethernet : RJ45 Extended UTP : RJ45 Power : DC Jack	Environmental	Operating Temperature : -40°C ~ +80°C (-40°F ~ +176°F) Storage Temperature : -40°C ~ +80°C (-40°F ~ +176°F) Humidity : 10 ~ 90 % (non-condensing)
Dimension	40 x 40 x 76 mm, 1.57 x 1.57 x 2.99 in (H x W x L, Without Bracket Length)		

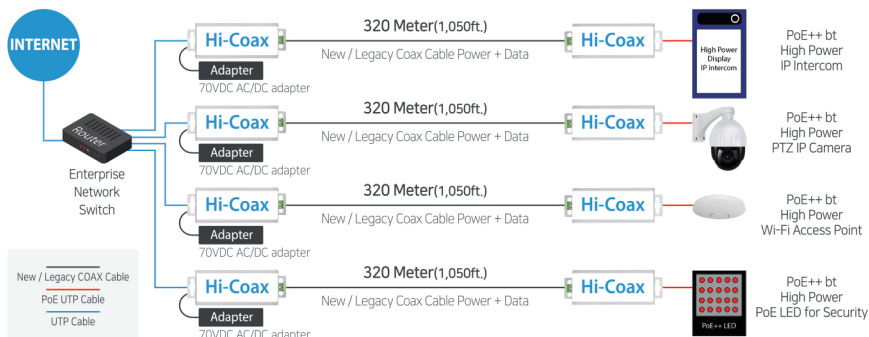


C4L6400-EoC-BT

PoE++ bt over Coax Transceiver



Specifications			
Standards	IEEE 802.3, IEEE 802.3u, IEEE 802.3x, Auto MDI/X	Power	Input AC : 100 ~ 240 VAC, 50 ~ 60 Hz 5V to 70VDC / 1A ~ 1.6A (For PoE Function, please use 48V 0.83A Adapter at least.)
LAN Port	Connector Type : RJ45 Speed : 10/100 Base T, half/full duplex, auto-negotiation PoE : IEEE 802.3 af/at/bt PoE++ 90Watts	Extended Coax Port	Connector Type : Female BNC, RG-59/U or Similar Impedance : 50 to 100 Ω Transmission Distance : 1,500 Meters
Connectors	Ethernet : RJ45 Extended Coax : Female BNC Power : DC Jack	Environmental	Operating Temperature : -40°C ~ +80°C (-40°F ~ +176°F) Storage Temperature : -40°C ~ +80°C (-40°F ~ +176°F) Humidity : 10 ~ 90 % (non-condensing)
Dimension	40 x 40 x 76 mm, 1.57 x 1.57 x 2.99 in (H x W x L, Without Bracket Length)		



10/100/1000 Mbps Products

C4L2000G-2W-P

Gigabit PoE over 2Wire Transceiver



Product Overview

The G.2Wire™, model C4L2000G-2W-P is the real gigabit PoE over 2Wire transceiver. It support up to 2 Gbps data transfer speed for AV Devices, IP Networking, Game Console and IP Surveillance application. Its powerful data streaming technology transports ultra-high speed HD Entertainment networks in Home, Residential Building and large building.

Specifications

Standards	IEEE 802.3, IEEE 802.3u, IEEE 802.3ab, IEEE 802.3x, IEEE 802.3az, IEEE 802.3p, Auto MDI/X ITU-T G.hn Standard (Recommendations G.9960, G.9961, G.9962, G.9963 and G.9964)
Power	Input AC : 100 ~ 240 VAC, 50 ~ 60 Hz 5V to 56VDC / 1A ~ 1.6A (For PoE Function, please use 48V 0.83A Adapter at least.)
Transmission Rate	957 Mbps Full Duplex (Physical Speed : 2,000 Mbps) Connector Type : RJ45
LAN Port	Speed : 10/100/1000 Base T, half/full duplex, auto-negotiation PoE : IEEE 802.3 af/at PoE+ 40Watts Connector Type : 3 Port Terminal Block
Extended Port Interface	Support Cable : 2Wire, 3Wire, Cat 5., Cat 5E., Cat 6., Cat 6E., Cat 7. Transmission Distance : 700 Meters
Connectors	• Ethernet : RJ45 • Extended Port : 3 Port Terminal Block • Power : DC Jack Hardware packet inspection for IPv4 IGMP Snooping and IPv6 MLD
Multicast	Support IGMP managed multicast sessions IGMP snooping with multicast to multiple unicast support IGMP/MLD Address Filtering
Security	128 Bit AES CCMP Encryption
LED Indication	• Power : BLUE - Power ON • TWP : Green - Link ON • PoE : Green - PoE ON
Dimension	40 x 42 x 86 mm, 1.57 x 1.65 x 3.39 in (H x W x L) Operating Temperature : 0°C ~ + 70°C (+32°F ~ +158°F)
Environmental	Storage Temperature : -40°C ~ + 70°C (-40°F ~ + 158°F) Humidity : 10 ~ 90 % (non-condensing)

C4L2000G-TWP-P

Gigabit PoE over UTP Transceiver



Product Overview

The G.UTP™, model C4L2000G-TWP-P is the real gigabit PoE over UTP transceiver. It support up to 2 Gbps data transfer speed for AV Devices, IP Networking, Game Console and IP Surveillance application. Its powerful data streaming technology transports ultra-high speed HD Entertainment networks in Home, Residential Building and large building.

Specifications

Standards	IEEE 802.3, IEEE 802.3u, IEEE 802.3ab, IEEE 802.3x, IEEE 802.3az, IEEE 802.3p, Auto MDI/X ITU-T G.hn Standard (Recommendations G.9960, G.9961, G.9962, G.9963 and G.9964)
Power	Input AC : 100 ~ 240 VAC, 50 ~ 60 Hz 5V to 56VDC / 1A ~ 1.6A (For PoE Function, please use 48V 0.83A Adapter at least.)
Transmission Rate	957 Mbps Full Duplex (Physical Speed : 2,000 Mbps) Connector Type : RJ45
LAN Port	Speed : 10/100/1000 Base T, half/full duplex, auto-negotiation PoE : IEEE 802.3 af/at PoE+ 40Watts Connector Type : RJ45
Extended Port Interface	Support Cable : 2Wire, 3Wire, Cat 5., Cat 5E., Cat 6., Cat 6E., Cat 7. Transmission Distance : 700 Meters
Connectors	• Ethernet : RJ45 • Extended Port : RJ45 • Power : DC Jack Hardware packet inspection for IPv4 IGMP Snooping and IPv6 MLD
Multicast	Support IGMP managed multicast sessions IGMP snooping with multicast to multiple unicast support IGMP/MLD Address Filtering
Security	128 Bit AES CCMP Encryption
LED Indication	• Power : BLUE - Power ON • TWP : Green - Link ON • PoE : Green - PoE ON
Dimension	40 x 42 x 86 mm, 1.57 x 1.65 x 3.39 in (H x W x L) Operating Temperature : 0°C ~ + 70°C (+32°F ~ +158°F)
Environmental	Storage Temperature : -40°C ~ + 70°C (-40°F ~ + 158°F) Humidity : 10 ~ 90 % (non-condensing)

C4L2000G-EoC-P

Gigabit PoE over Coax Transceiver



Product Overview

The G.Coax™, model C4L2000G-EoC-P is the real gigabit PoE over Coax transceiver. It support up to 2 Gbps data transfer speed for AV Devices, IP Networking, Game Console and IP Surveillance application. Its powerful data streaming technology transports ultra-high speed HD Entertainment networks in Home, Residential Building and large building.

Specifications

Standards	IEEE 802.3, IEEE 802.3u, IEEE 802.3ab, IEEE 802.3x, IEEE 802.3az, IEEE 802.3p, Auto MDI/X ITU-T G.hn Standard (Recommendations G.9960, G.9961, G.9962, G.9963 and G.9964)
Power	Input AC : 100 ~ 240 VAC, 50 ~ 60 Hz 5V to 56VDC / 1A ~ 1.6A (For PoE Function, please use 48V 0.83A Adapter at least.)
Transmission Rate	957 Mbps Full Duplex (Physical Speed : 2,000 Mbps) Connector Type : RJ45
LAN Port	Speed : 10/100/1000 Base T, half/full duplex, auto-negotiation PoE : IEEE 802.3 af/at PoE+ 40Watts Connector Type : BNC, RG-59/U or Similar
Extended Port Interface	Support Cable : CATV 22 or 20AWG, RG59/U 22 or 20AWG, RG6 18AWG, RG11 14AWG, etc. Transmission Distance : 1,000 Meters
Connectors	• Ethernet : RJ45 • Extended Port : Female BNC • Power : DC Jack Hardware packet inspection for IPv4 IGMP Snooping and IPv6 MLD
Multicast	Support IGMP managed multicast sessions IGMP snooping with multicast to multiple unicast support IGMP/MLD Address Filtering
Security	128 Bit AES CCMP Encryption
LED Indication	• Power : BLUE - Power ON • TWP : Green - Link ON • PoE : Green - PoE ON
Dimension	40 x 42 x 86 mm, 1.57 x 1.65 x 3.39 in (H x W x L) Operating Temperature : 0°C ~ + 70°C (+32°F ~ +158°F)
Environmental	Storage Temperature : -40°C ~ + 70°C (-40°F ~ + 158°F) Humidity : 10 ~ 90 % (non-condensing)

10/100 Mbps Products



C4L6400-2W-P

PoE over 2Wire Transceiver

Standards IEEE 802.3, IEEE 802.3u, IEEE 802.3x, Auto MDI/X

LAN Port Connector Type : RJ45
Speed : 10/100 Base T, half/full duplex, auto-negotiation
PoE : IEEE 802.3 af/at PoE+ 40Watts

Connectors Ethernet : RJ45
Extended 2Wire : 2Pin Terminal Block
Power : DC Jack

Dimension 40 x 40 x 76 mm, 1.57 x 1.57 x 2.99 in
(H x W x L, Without Bracket Length)

Power Input AC : 100 ~ 240 VAC, 50 ~ 60 Hz
5V to 56VDC / 1A ~ 1.6A
(For PoE Function, please use 48V 0.83A Adapter at least.)

Extended 2Wire Port Connector Type : 2Pin Terminal Block
Support Cable : 2Wire, Cat 5., Cat 5E., Cat 6., Cat 6E., Cat 7.
Transmission Distance : 300 Meters

Environmental Operating Temperature : -10°C ~ +50°C (+14°F ~ +122°F)
Storage Temperature : -30°C ~ +70°C (-22°F ~ +158°F)
Humidity : 10 ~ 90 % (non-condensing)



C4L6400-TWP-P

PoE over UTP Transceiver

Standards IEEE 802.3, IEEE 802.3u, IEEE 802.3x, Auto MDI/X

LAN Port Connector Type : RJ45
Speed : 10/100 Base T, half/full duplex, auto-negotiation
PoE : IEEE 802.3 af/at PoE+ 40Watts

Connectors Ethernet : RJ45
Extended UTP : RJ45
Power : DC Jack

Dimension 40 x 40 x 76 mm, 1.57 x 1.57 x 2.99 in
(H x W x L, Without Bracket Length)

Power Input AC : 100 ~ 240 VAC, 50 ~ 60 Hz
5V to 56VDC / 1A ~ 1.6A
(For PoE Function, please use 48V 0.83A Adapter at least.)

Extended UTP Port Connector Type : RJ45
Support Cable : 2Wire, Cat 5., Cat 5E., Cat 6., Cat 6E., Cat 7.
Transmission Distance : 500 Meters

Environmental Operating Temperature : -10°C ~ +50°C (+14°F ~ +122°F)
Storage Temperature : -30°C ~ +70°C (-22°F ~ +158°F)
Humidity : 10 ~ 90 % (non-condensing)



C4L6400-EoC-P

PoE over Coax Transceiver

Standards IEEE 802.3, IEEE 802.3u, IEEE 802.3x, Auto MDI/X

LAN Port Connector Type : RJ45
Speed : 10/100 Base T, half/full duplex, auto-negotiation
PoE : IEEE 802.3 af/at PoE+ 40Watts

Connectors Ethernet : RJ45
Extended Coax : Female BNC
Power : DC Jack

Dimension 40 x 40 x 76 mm, 1.57 x 1.57 x 2.99 in
(H x W x L, Without Bracket Length)

Power Input AC : 100 ~ 240 VAC, 50 ~ 60 Hz
5V to 56VDC / 1A ~ 1.6A
(For PoE Function, please use 48V 0.83A Adapter at least.)

Extended Coax Port Connector Type : Female BNC, RG-59/U or Similar
Impedance : 50 to 100 Ω
Transmission Distance : 1,500 Meters

Environmental Operating Temperature : -10°C ~ +50°C (+14°F ~ +122°F)
Storage Temperature : -30°C ~ +70°C (-22°F ~ +158°F)
Humidity : 10 ~ 90 % (non-condensing)



C4L6400M-2W-P

Mini Size PoE over 2Wire Transceiver

Standards IEEE 802.3, IEEE 802.3u, IEEE 802.3x, Auto MDI/X

LAN Port Connector Type : RJ45
Speed : 10/100 Base T, half/full duplex, auto-negotiation
PoE : IEEE 802.3 af/at PoE+ 40Watts

Connectors Ethernet : RJ45
Extended 2Wire : 2Pin Terminal Block
Power : DC Jack

Dimension 26 x 42 x 70 mm, 1.02 x 1.65 x 2.75 in
(H x W x L)

Power Input AC : 100 ~ 240 VAC, 50 ~ 60 Hz
5V to 56VDC / 1A ~ 1.6A
(For PoE Function, please use 48V 0.83A Adapter at least.)

Extended 2Wire Port Connector Type : 2Pin Terminal Block
Support Cable : 2Wire, Cat 5., Cat 5E., Cat 6., Cat 6E., Cat 7.
Transmission Distance : 300 Meters

Environmental Operating Temperature : -10°C ~ +50°C (+14°F ~ +122°F)
Storage Temperature : -30°C ~ +70°C (-22°F ~ +158°F)
Humidity : 10 ~ 90 % (non-condensing)



C4L6400-2W-U-D

IP Ethernet over Dual Port 2Wire Transceiver (USB Powered)

Standards IEEE 802.3, IEEE 802.3u, IEEE 802.3x, Auto MDI/X

LAN Port Connector Type : RJ45
Speed : 10/100 Base T, half/full duplex, auto-negotiation
PoE : N/A

Connectors Ethernet : RJ45
Extended 2Wire : Dual Port of 2Pin Terminal Block
Power : 2Pin Terminal Block

Dimension 40 x 40 x 76 mm, 1.57 x 1.57 x 2.99 in
(H x W x L, Without Bracket Length)

Power Input AC : 100 ~ 240 VAC, 50 ~ 60 Hz
Powered by Two wire to USB cable or 5VDC / 500mA

Extended 2Wire Port Connector Type : Dual Port of 2Pin Terminal Block
Support Cable : 2Wire, Cat 5., Cat 5E., Cat 6., Cat 6E., Cat 7.
Transmission Distance : 300 Meters

Environmental Operating Temperature : -10°C ~ +50°C (+14°F ~ +122°F)
Storage Temperature : -30°C ~ +70°C (-22°F ~ +158°F)
Humidity : 10 ~ 90 % (non-condensing)

10/100 Mbps Products & Rack Units



C4L6400WL-2W-P

Wall Mounted PoE over 2Wire Transceiver

Standards IEEE 802.3, IEEE 802.3u, IEEE 802.3x, Auto MDI/X

LAN Port Connector Type : RJ45
Speed : 10/100 Base T,
half/full duplex, auto-negotiation
PoE : IEEE 802.3 af/at PoE+ 40Watts

Connectors Ethernet : RJ45
Extended 2Wire : 2Pin Terminal Block
Power : DC Jack

Dimension 30 x 85 x 85 mm, 1.18 x 3.34 x 3.34 in
(H x W x L)

Power Input AC : 100 ~ 240 VAC, 50 ~ 60 Hz
5V to 56VDC / 1A ~ 1.6A
(For PoE Function, please use 48V 0.83A Adapter at least.)

Extended 2Wire Port Connector Type : 2Pin Terminal Block
Support Cable : 2Wire, Cat 5., Cat 5E., Cat 6., Cat 6E., Cat 7.
Transmission Distance : 300 Meters

Environmental Operating Temperature : -10°C ~ +50°C (+14°F ~ +122°F)
Storage Temperature : -30°C ~ +70°C (-22°F ~ +158°F)
Humidity : 10 ~ 90 % (non-condensing)



μ-2Wire R U (10 Port / 40 Channel)

PoE over 2Wire Rack Mount Unit

Standards IEEE 802.3, IEEE 802.3u, IEEE 802.3x, Auto MDI/X

LAN Port Connector Type : RJ45
Speed : 10/100 Base T, half/full duplex,
auto-negotiation
PoE : IEEE 802.3 af/at PoE+ 40Watts

Connectors Ethernet : 10 Port of RJ45
Extended 2Wire : 10 Port of 2Wire Terminal Block
Power : 1 Port of 1x3 Pole AC Inlet IEC320-C14

Dimension 2U 19" Standard Rack Size, 3.46 x 17.12 x 11.81 in,
88 x 435 x 300 mm (H x W x L)

Power Input AC : 100 ~ 240 VAC, 50 ~ 60 Hz Internal Power Supply
1x3 Pole AC Inlet IEC320-C14
48V to 56VDC / 1A ~ 1.6A / Power over 2Wire (Po2) - 600 Watts

Extended 2Wire Port Connector Type : 2Wire Terminal Block
Impedance : 25 to 100 Ω
Transmission Distance : 300 Meters

Environmental Operating Temperature : -10°C ~ +50°C (+14°F ~ +122°F)
Storage Temperature : -30°C ~ +70°C (-22°F ~ +158°F)
Humidity : 10 ~ 90 % (non-condensing)



μ-2Wire R U (6 Port / 24 Channel)

PoE over 2Wire Rack Mount Unit

Standards IEEE 802.3, IEEE 802.3u, IEEE 802.3x, Auto MDI/X

LAN Port Connector Type : RJ45
Speed : 10/100 Base T, half/full duplex,
auto-negotiation
PoE : IEEE 802.3 af/at PoE+ 40Watts

Connectors Ethernet : 6 Port of RJ45
Extended 2Wire : 6 Port of 2Wire Terminal Block
Power : 1 Port of 1x3 Pole AC Inlet IEC320-C14

Dimension 2U 19" Standard Rack Size, 3.46 x 17.12 x 11.81 in,
88 x 435 x 300 mm (H x W x L)

Power Input AC : 100 ~ 240 VAC, 50 ~ 60 Hz Internal Power Supply
1x3 Pole AC Inlet IEC320-C14
48V to 56VDC / 1A ~ 1.6A / Power over 2Wire (Po2) - 450 Watts

Extended 2Wire Port Connector Type : 2Wire Terminal Block
Impedance : 25 to 100 Ω
Transmission Distance : 300 Meters

Environmental Operating Temperature : -10°C ~ +50°C (+14°F ~ +122°F)
Storage Temperature : -30°C ~ +70°C (-22°F ~ +158°F)
Humidity : 10 ~ 90 % (non-condensing)



μ-2Wire R U (4 Port / 16 Channel)

PoE over 2Wire Rack Mount Unit

Standards IEEE 802.3, IEEE 802.3u, IEEE 802.3x, Auto MDI/X

LAN Port Connector Type : RJ45
Speed : 10/100 Base T, half/full duplex,
auto-negotiation
PoE : IEEE 802.3 af/at PoE+ 40Watts

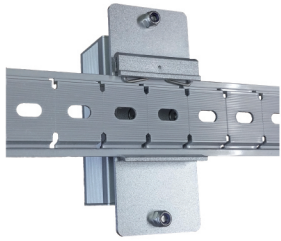
Connectors Ethernet : 4 Port of RJ45
Extended 2Wire : 4 Port of 2Wire Terminal Block
Power : 1 Port of 1x3 Pole AC Inlet IEC320-C14

Dimension 2U 19" Standard Rack Size, 3.46 x 17.12 x 11.81 in,
88 x 435 x 300 mm (H x W x L)

Power Input AC : 100 ~ 240 VAC, 50 ~ 60 Hz Internal Power Supply
1x3 Pole AC Inlet IEC320-C14
48V to 56VDC / 1A ~ 1.6A / Power over 2Wire (Po2) - 450 Watts

Extended 2Wire Port Connector Type : 2Wire Terminal Block
Impedance : 25 to 100 Ω
Transmission Distance : 300 Meters

Environmental Operating Temperature : -10°C ~ +50°C (+14°F ~ +122°F)
Storage Temperature : -30°C ~ +70°C (-22°F ~ +158°F)
Humidity : 10 ~ 90 % (non-condensing)



C4L6400-DIN

C4L6400-DIN

Panel	Material from the best aluminum (Thickness : 2mm) Sanding aluminum for anodizing treatment Color : Silver	Available Models	C4L6400-2W-P C4L6400-TWP-P C4L6400-TWP C4L6400-EoC-P C4L6400-2W-U-D C4L6400-2W-BT C4L6400-TWP-BT C4L6400-EoC-BT
Mounting Clip	35mm Din-Rail Clip RoHS Compliant Material : Aluminum Color : Silver		
Screw	M4 Truss Head Screw, M4 Nylon Nut		



C4L6400-UTPT

1:2 UTP Connector

1:2 UTP Connector The C4L6400-UTPT is a high quality UTP 1:2 adaptor, which is used by C4Line's IP transceivers to split C4L2000G-TWP-P, C4L6400-TWP and C4L6400-TWP-P data signals. The C4L6400-UTPT may be used at the head-end or mid-span for UTP daisy-chain applications. Product weight: 0.018 lbs (0.008 Kg)



C4L6400-BNCT

BNC T Connector

Description The C4L6400-BNCT is a high quality "T" adaptor, which is used by C4Line's IP transceivers to split C4L2000G-EoC-P, C4L6400-EoC and C4L6400-EoC-P data signals. The C4L6400-BNCT may be used at the head-end or mid-span for Coax daisy-chain applications. Product weight: 0.031 lbs (0.014 Kg)



C4L6400-B2W

BNC to 2Wire Connector

Description The C4L6400-B2W is used by C4Line's IP Extenders to convert from BNC to 2 Wire. The C4L6400-B2W may be used along a wire run whenever conversion between coax and 2Wire cable is required. The C4L6400-B2W support wire diameters as large as 16 AWG 0.051" (1.3mm) and can be used in applications such as: 2:1 fan-out, Daisy-chaining, or 4 Pair wire connectivity. Screws of the C4L6400-B2W should be torqued to 2 in-lbs (0.2 Nm). The C4L6400-B2W is not intended for use with analog video transmission. Product weight: 0.028 lbs (12.5 g)



C4L6400-RJ45A

RJ45 to Terminal Block Connector

Description The C4L6400-RJ45A is a high quality UTP Splitter, which is used by C4Line's IP transceivers to split C4L2000G-TWP-P, C4L6400-TWP and C4L6400-TWP-P data signals. The C4L6400-RJ45A may be used at the head-end or mid-span for UTP/2Wire daisy-chain applications. Product weight: 0.040 lbs (18 g)



Connect the Future

C4Line is focused on designing cutting-edge network solutions tailored for diverse IP-driven environments. Our development efforts are centered on creating innovative and adaptable products for both wired and wireless IP communications. Through our IP extension solutions, we ensure that users experience seamless, convenient, and intuitive interactions with IP-based technologies.

To tackle the inefficiencies users often face in utilizing IP networks, we expedite the development and commercialization of products targeting 'First Step' adopters and 'Niche Markets' across various industries. This approach allows us to rapidly deliver solutions that meet specific market demands.

Driven by our mission to 'Connect the Future,' we are dedicated to creating IP network products that bridge global communication needs. At C4Line, our team continuously strives to innovate and set new standards, making a meaningful 'Difference' in the realm of IP communication technology.

C4Line Co.

Email : info@c4line.com

Tel : +82 70 4100 8847

Fax : +82 504 204 9847

Linkedin : www.linkedin.com/company/c4line

www.c4line.com



C4Line Website